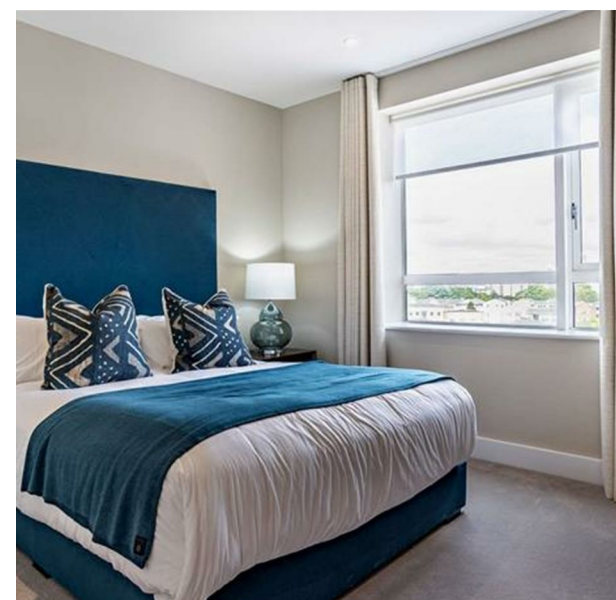
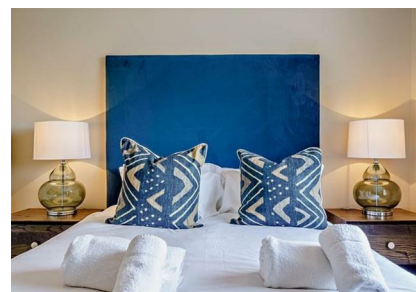


13 Westferry Circus, London, Greater London, E14 8RW  
£884 Per Week

COMPLETION  
SALES & LETTINGS



I3 Westferry Circus, London, Greater London, E14 8RW

£884 Per Week

Council Tax Band: E

Welcome to this stunning two-bedroom apartment located in the prestigious Circus Apartments in Canary Wharf, E14. Spanning an impressive 947 square feet, this modern flat offers a perfect blend of style and comfort, making it an ideal home for professionals and families alike.

As you enter the property, you are greeted by a spacious reception room that provides a warm and inviting atmosphere, perfect for both relaxation and entertaining guests. The large windows allow natural light to flood the space, enhancing the contemporary design and creating a bright living environment.

The apartment features two well-appointed bedrooms, each designed with comfort in mind. The master bedroom benefits from an en-suite bathroom, providing added privacy and convenience. The second bathroom is equally stylish and functional, catering to the needs of residents and visitors alike.









337 Forest Road

London

E17 5JR

02085277007

enquiries@completion.co.uk

completion.co.uk



| Energy Efficiency Rating                    |         |                            |
|---|---------|----------------------------|
|   | Current | Potential                  |
| Very energy efficient - lower running costs |         |                            |
| (92 plus) <b>A</b>                          |         |                            |
| (81-91) <b>B</b>                            |         |                            |
| (69-80) <b>C</b>                            |         |                            |
| (55-68) <b>D</b>                            |         |                            |
| (39-54) <b>E</b>                            |         |                            |
| (21-38) <b>F</b>                            |         |                            |
| (1-20) <b>G</b>                             |         |                            |
| Not energy efficient - higher running costs |         |                            |
| England & Wales                             |         | EU Directive<br>2002/91/EC |